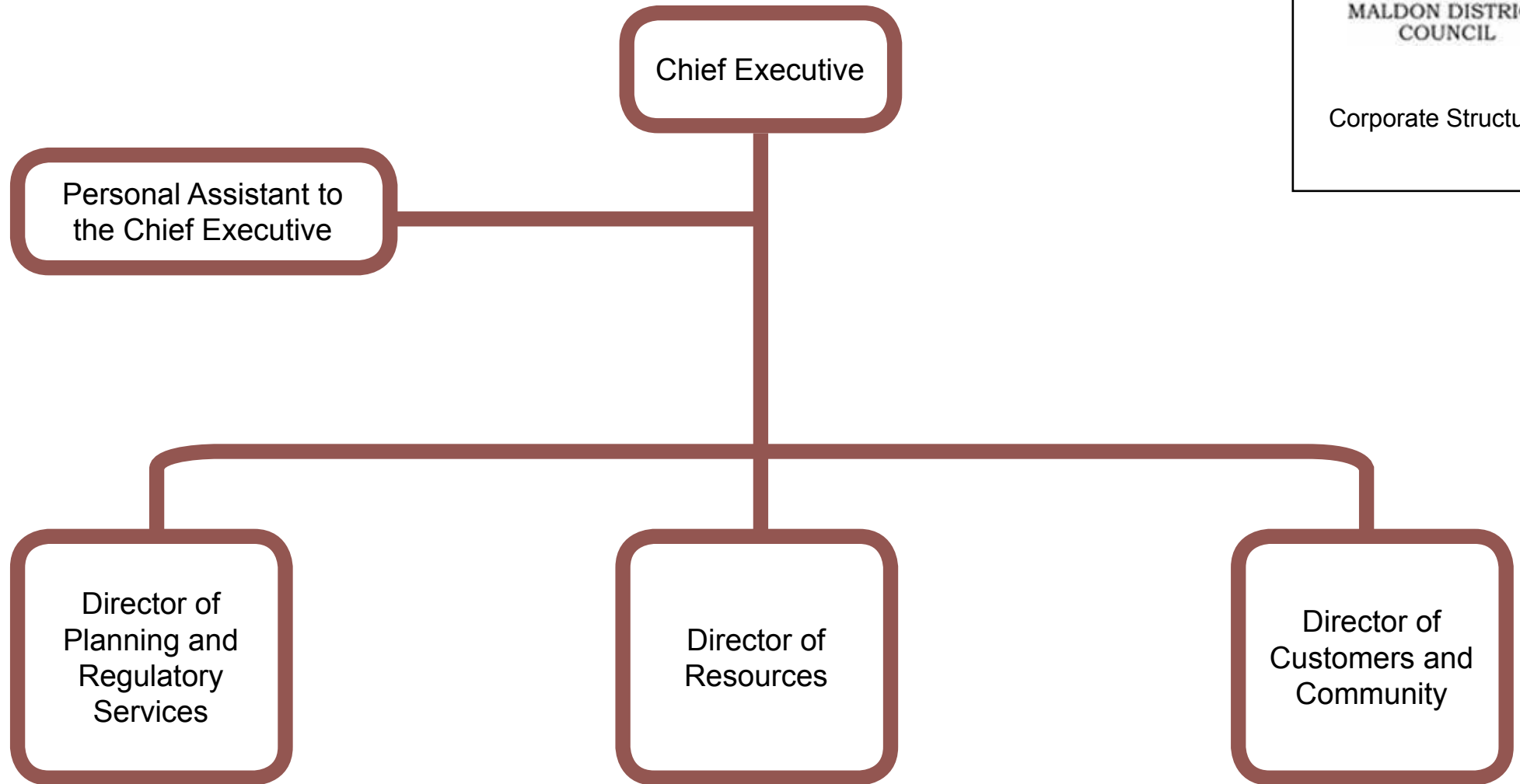




MALDON DISTRICT
COUNCIL

Corporate Structure



home

Personal
Assistant

Director of Planning &
Regulatory Services

Directorate of Planning and
Regulatory Services

Strategic Planning
Policy Manager

Spatial Planning
Team Leader

Interim Senior
Policy Officer

Senior Planning
Policy Officer

Planning Policy
Technician

Snr Conservation &
Urban Design Off

Conservation
Officer

Spatial Planning
& Implementation
Officer

LDP Projects
Officer

Major
Applications
Officer

Major
Applications
Officer

Snr Planning
Officer Major Apps
Officer

CIL/Section 106/
Monitoring Officer

Planning Policy
Graduate Trainee

Dev Management
& Enf Manager

Senior Planning
Officer

Snr Planning
Officer(mat cover)

Tree Officer

Group Manager
Planning Services

Building Control
Team Leader

Building Control
Officers

Assistant Building
Control Officer

Technical Support
Officer

Corporate
Enforcement
Officer

Snr Planning
Officer

Planning Officer

Planning Officer

Admin Officer

Technical Planners

Corporate Fraud & Enforcement Officers

Economic Dev,
Partnerships &
Projects Mgr

Economic
Development
Officer
(temporary cover)

Economic
Development
Officer

Business Dev
& Improvement
Officer

Street Naming &
Numbering Off

Land Charges
Officer

Land Charges
Officer

Senior Admin
Officer

Admin Officers

Strategic Housing
Manager

Housing
Assessment &
Enabling T Ldr

Housing Projects
Officer

Homelessness
Officer

Homeless
Prevention Officer

Choice Based
Lettings Off

Choice Based
Lettings Off

Home
Improvements
Team Leader

Housing Options
Team Leader

Homelessness
Officer

Homeless
Prevention Officer

Homeless
Prevention Officer

Housing Surveyor

Home Improvements Officers

Env Health
Technician

Env Health Officer

Environment
Officer

Env Health
Technician

Environmental
Health & Licensing
Manager

Pest Control Officer

Senior Admin
Officer

Env Health Mgr -
Commercial

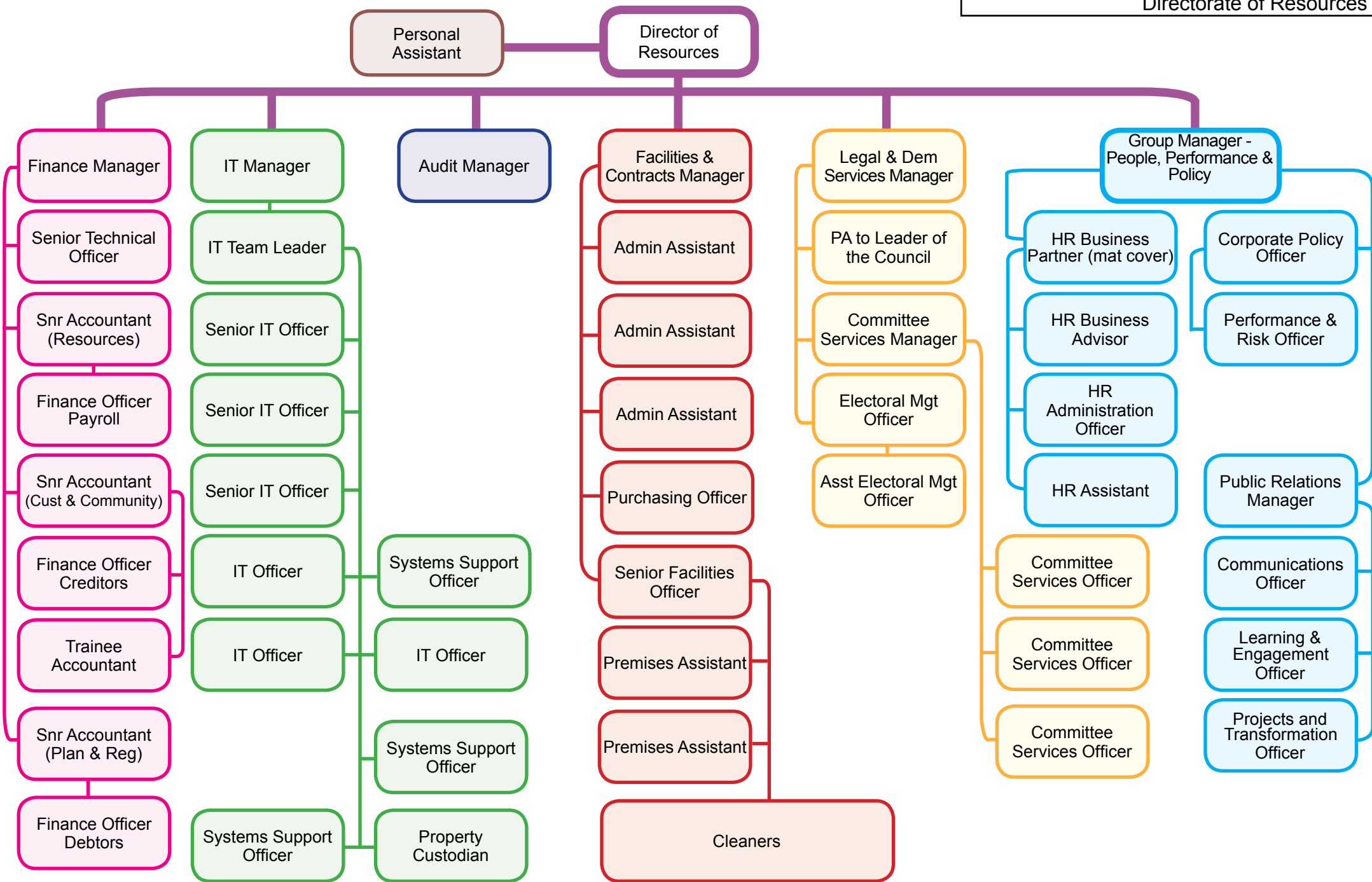
Env Health Officer

Env Health
Technician

Sampling Officer

Env Health Mgr -
Env Protection

Env Health Officer



home

Personal
Assistant

Director of
Customers &
Community

Directorate of Customers and
Community

C'tryside & Coast
Dev Officer (major apps)

Group Manager
Leisure, C'tryside
& Tourism

Admin Officer

Tourism and
Events Manager

Countryside &
Coast Manager

Maintenance
Officer

Leisure &
Community
Manager

River Bailiff

Asst Maintenance
Officer

Snr Splash Park
Assistant
FTC

Sports
Development
Officer

Highway Ranger

Seasonal Splash
Park Assistant
x 5 FTC

Sports
Development
Officer

Highway Ranger

Cemeteries
Officer

Fitsteps
Co-ordinator

Parks Coordinator

TIC Supervisor

Football
Development
Officer

Parks Supervisor

TIC Advisors

Football
Development Asst

Horticultural
Officer

Dengie Project
Officer

Gardeners

Seasonal
Gardener
x 3 FTC

Group Manager
Customers

Technical Team
Leader

Snr Technical
Officers

Tech Officers
Business Rates

Technical Officers

Quality &
Performance
Officer

Apprentice

Snr Recovery
Officers

Revenues
Assistants

Processing Team
Leader

Snr Processing
Officer

Apprentice
Business Support

Revenues
Assistants

Processing Officers

Community
Development
Officer

Customer Services
Team Leader

Group Manager
Community & Living

Waste & Street
Scene Manager

Waste Education &
Promotions Officer

Admin Officer

Admin Officer

Community
Safety Partnership
Manager

Community
Safety Dev Officer

ASB Co-ordinator

Administration
Assistant

Community
Safety Officer
- Community
Resilience

Park Rangers
Team Leader

Street Scene
Enforcement
Officers

Park Rangers

Enforcement
Officers

post shared with
Chelmsford City Council

Customer Services advisors